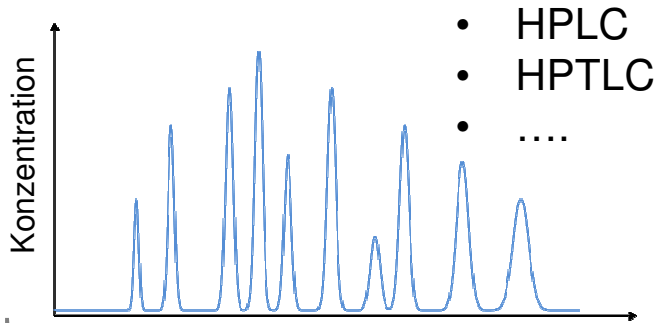
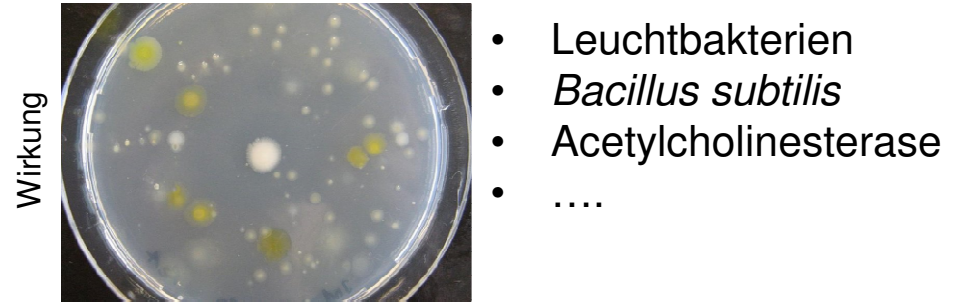


Wirkungsbezogene Analytik (WBA)

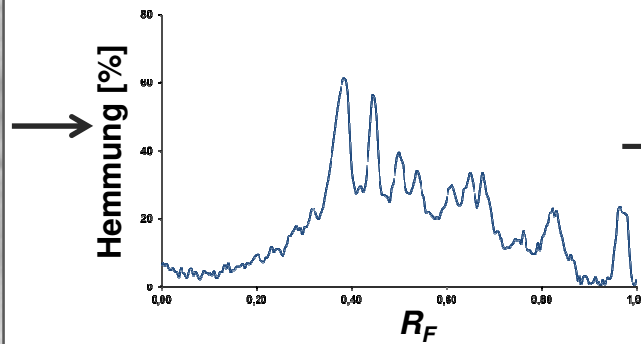
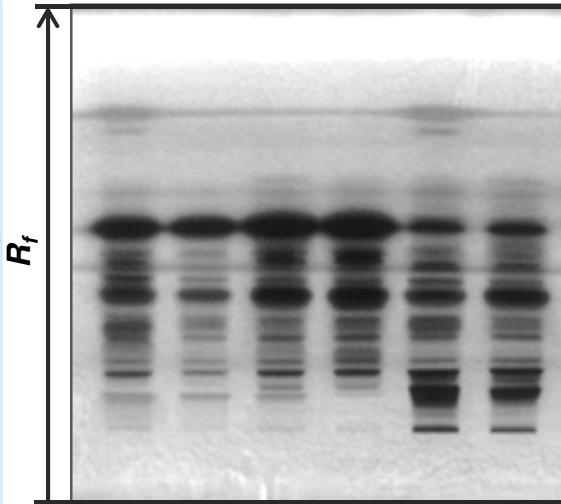
Trennung



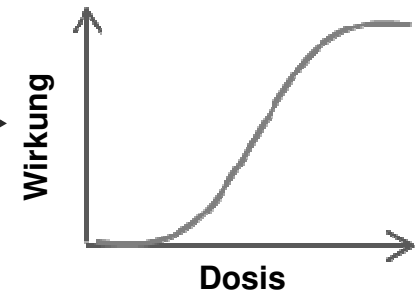
Detektion *in-vitro* Bioassay



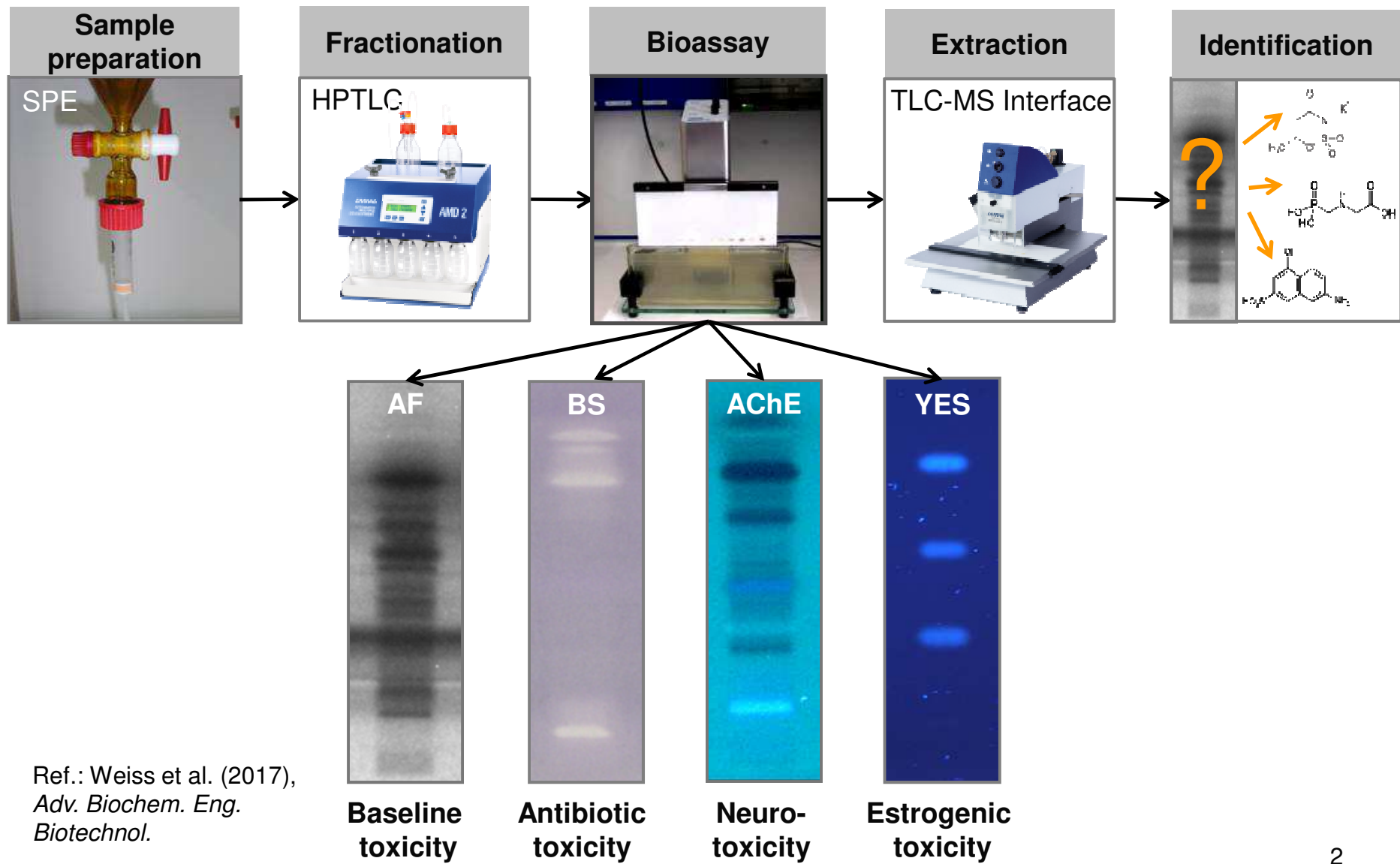
Wirkungsbezogene Analytik



Dosis-Wirkungsbeziehung



Overview of effect-directed analysis with HPTLC



Ref.: Weiss et al. (2017),
Adv. Biochem. Eng. Biotechnol.

Schematischer Ablauf der HPTLC/AMD-Analyse mit Leuchtbakteriendetektion

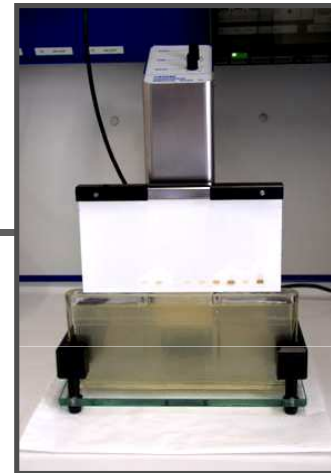
Auftragung



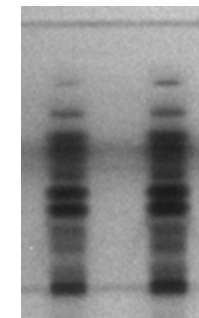
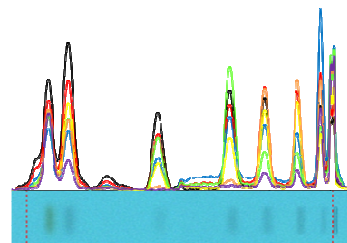
Entwicklung



Tauchung

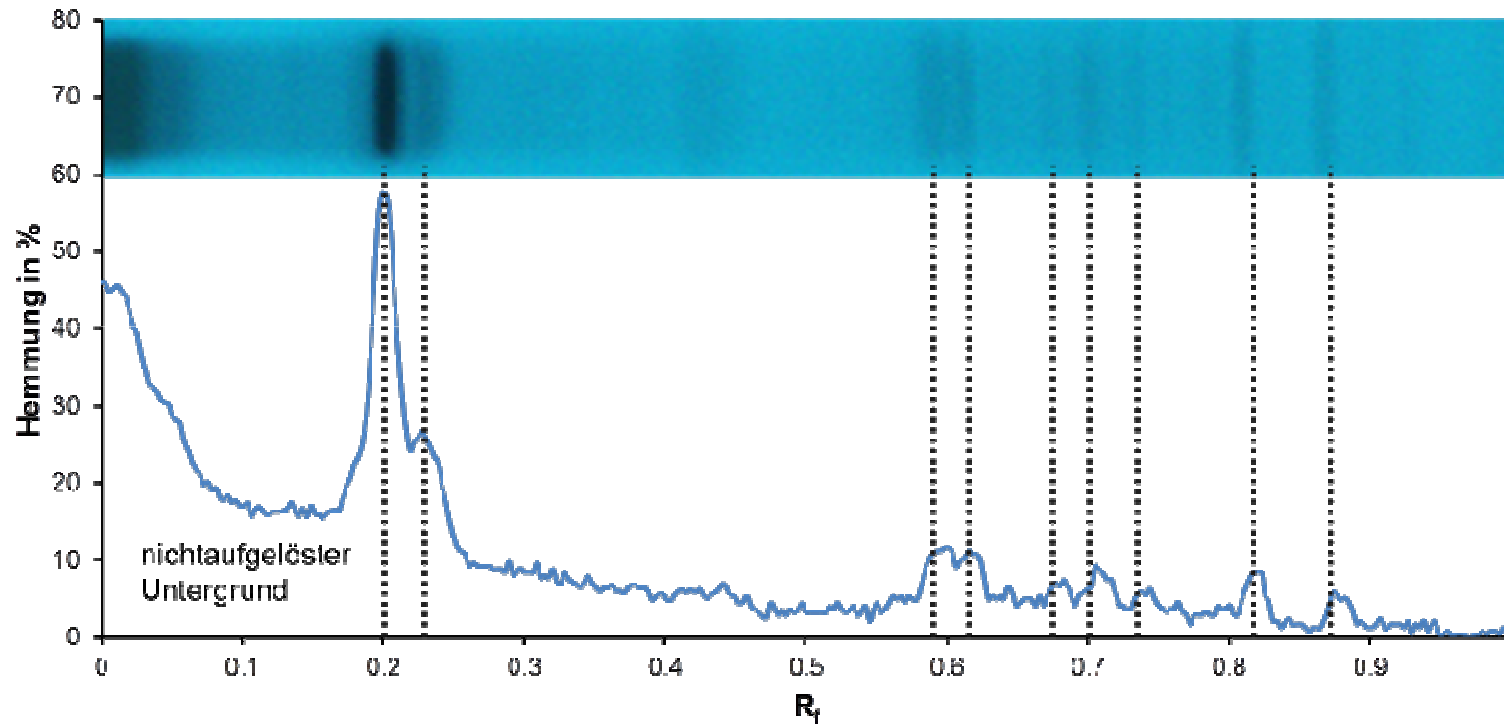


Detektion

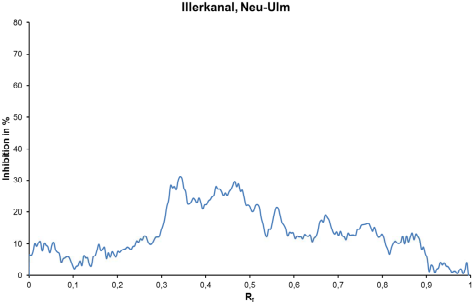
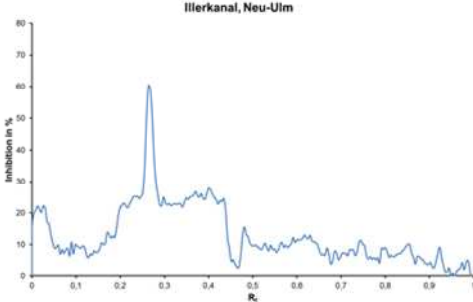
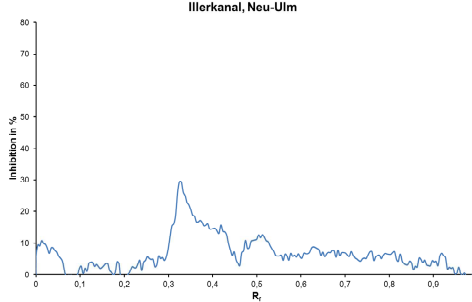
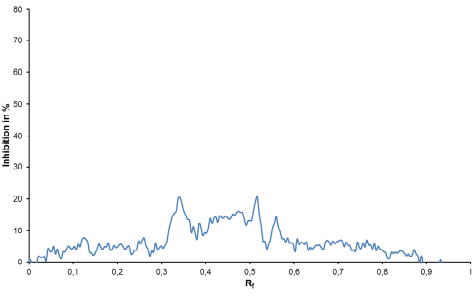
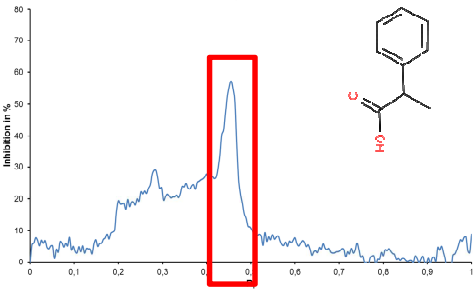
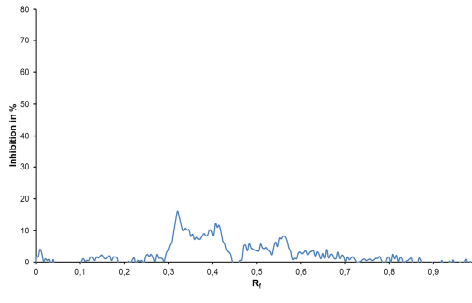


Weisemann, C., Kreiss, W., Rast, H-G., Eberz. G.; "Analytical Method for Investigating Mixtures for Toxic Components." European Patent No: EP 0 588 139 B1.

Beispiel Acetylcholinesterase Hemmung Neurotoxizität

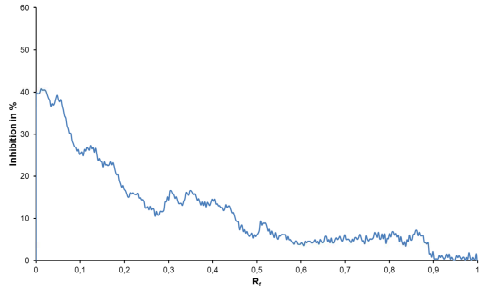
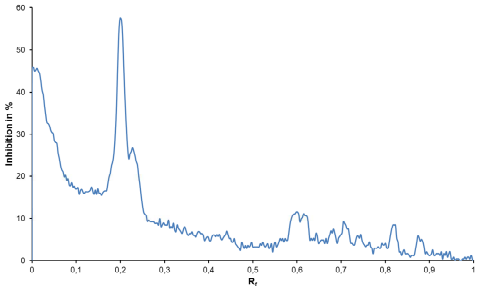
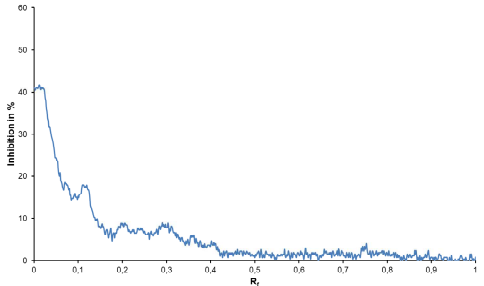
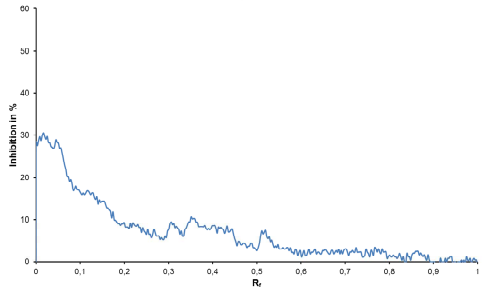
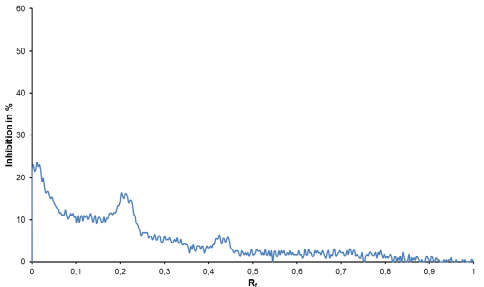
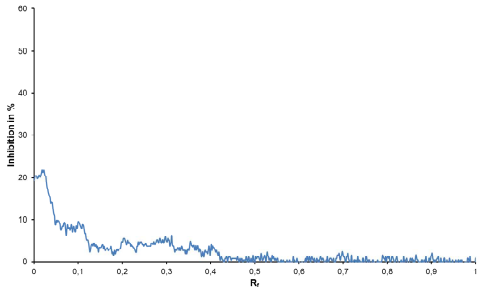


Beispiel Beprobung Donauzuflüsse

Basistoxizität	Juni 2017	Oktober 2017	Februar 2018
Illerkanal, Neu-Ulm			
Blau, Ulm (Bauhaus)			

Identifiziert als Ibuprofen
Targetanalytik ergab 13 µg/L

Beispiel Beprobung Donauzuflüsse

Neurotoxizität	Juni 2017	Oktober 2017	Februar 2018
Illerkanal, Neu-Ulm	<p style="text-align: center;">Illerkanal, Neu-Ulm</p> 	<p style="text-align: center;">Illerkanal, Neu-Ulm</p> 	<p style="text-align: center;">Illerkanal, Neu-Ulm</p> 
Blau, Ulm (Bauhaus)	<p style="text-align: center;">Blau, Ulm</p> 	<p style="text-align: center;">Blau, Ulm</p> 	<p style="text-align: center;">Blau, Ulm</p> 



Logistics:

- 1 x 2 L glass bottle provided by LW including transport box
- Quick delivery to LW after sampling necessary
- Analysis of all JDS4 samples offered
- *Greetings from Wolfgang Schulz!*