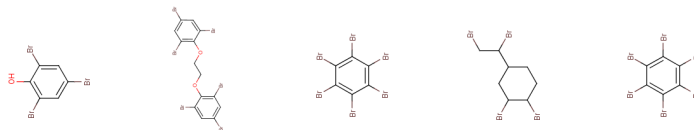




23-24 of November
2011 Stockholm
Sweden

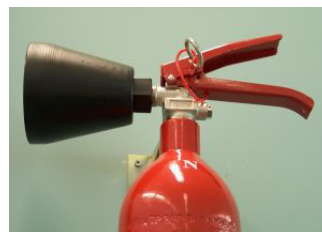
Norman Workshop

**“New” brominated flame retardants as emerging
contaminants in the environment**



Organised by

Norman
IVL Swedish Environmental Research Institute
Norwegian Institute for Air Research
Stockholm University
Umeå University



About the workshop

Because flame retardants such as polybrominated diphenyl ethers (PBDEs) are being phased out, an increasing number of alternative flame retardant chemicals have been introduced to comply with consumer product fire safety standards.

Recent studies have identified a widespread occurrence of some “new” brominated flame retardants (BFRs) in the environment. Several of the substances are persistent and may undergo long range atmospheric transport.

The workshop will bring together scientists and stakeholders working in the field. Present knowledge will be summarised and the need for new knowledge, monitoring and future research will be identified.

Following topics will be addressed:

Occurrence and distribution of emerging flame retardants (FR) in the environment.
Where do we find them and in which concentrations?

Emissions sources and important pathways of FR.
Use, fate and transformation products will be discussed.

Potential ecotoxicology and human effects.
Which effects are of concern? What is today’s knowledge and what do we need to know for reliable risk assessment?

Measurement methods.
The need for development and harmonization of methods will be addressed. Do we need to include new FRs in monitoring programs?

How big is the problem with emerging FRs?
Which message will we give to policy makers?

The workshop will be followed by a meeting with invited experts. The main objective of this expert meeting is to discuss and evaluate the future requirements with regard to new emerging brominated flame retardants.

The outcome from the expert meeting will be a position paper.

www.norman-network.net

www.ivl.se



Programme

23 November Spårvagnshallarna

12:20	Registration	
13:00	Welcome and Chair	Åke Iverfeldt IVL Swedish Environmental Research Institute
13:15	Presentation of the NORMAN network	Valeria Dulio INERIS, Institut National de l'Environnement Industriel et des Risques
13:30	Background to the workshop	Eva Brorström-Lundén IVL Swedish Environmental Research Institute
13:45	Improving the navigation among BFRs	Åke Bergman SU, Stockholm University
14:15	"New" Brominated Flame Retardants (BFR) in the Nordic and Arctic Environments	Martin Schlabach NILU – Norwegian Institute for Air Research
14:45	Coffee	
15:15	BFRs in marine mammals from Arctic and North Atlantic regions, 1986-2009	Anna Rotander and Bert van Bavel ORU, Örebro University
15:45	Chlorinated Flame Retardants (Dechloranes): analysis, occurrence and behaviour.	Ethel Eljarrat CSIC
16:15	Occurrence and use of brominated flame retardants and the fate of their toxic transformers: a challenge for policy makers	Stefan Posner SWEREA
16:45	Fate studies of selected BFRs	Patrik L. Andersson UmU, Umeå University
17:15	Polybrominated dibenzofurans: potential PBDE transformation products of concern	Peter Haglund UmU, Umeå University
17:45	Closing remarks	Eva Brorström-Lundén IVL Swedish Environmental Research Institute
19:00	Dinner, Spårvagnshallarnas festväning, Tegnérgatan 2 C	



Programme

24 November Spårvagnshallarna

08:30	Welcome and chair	Valeria Dulio INERIS, Institut National de l'Environnement Industriel et des Risques
08:35	Long-range transport of various BFRs, in particular the non-PBDEs in comparison to PBDEs	Martin Scheringer ETHZ, Swiss Federal Institute of Technology, Zurich
09:00	Indoor environment and human exposure of BFRs	Line Smastuen Haug Norwegian Institute of Public Health
09:30	What do we know about the effects of new BFRs?	Cynthia de Wit SU, Stockholm University
10:00	Coffe	
10:30	"Old", "new" and "novel" flame retardants in the environment - analytical methods and levels	Sicco Brandsma. IVM, Intitute for Environmental Studies
11:00	Conclusions from workshop/debate	Eva Brorström-Lundén IVL Swedish Environmental Research Institute
12:00	End of workshop	

Organisational matters

Registration and registration fees

To register use the attached registration form and send it to: sandra.delamotte@ivl.se
If you do not have a registration form please send an e-mail to sandra.delamotte@ivl.se

Registration fees for participation will be 100 € for Norman members and 150 € for non-Norman members. The fee covers the costs of all refreshments offered during the coffee breaks and dinner on the 23rd of November.

Final registration date: November 18th.

Accommodations

Special rates are available at the following hotels:

1. Elite Hotel Stockholm Plaza, Birger Jarlsgatan 29, +46 8 566 220 00
2. Crystal Plaza, Birger Jarlsgatan 35, +46 8 406 88 00
3. Elite Eden Park Hotel, Sturegatan 22, +46 8 555 627 00
4. Elite Hotel Arcadia, Körsbärsvägen 1, +46 8 566 215 00
5. Mornington Hotel, Nybrogatan 45, +46 8 507 330 00

Please mention IVL Swedish Environmental Research Institute when you make your reservation in order to obtain the discount.

Venue

Spårvagnshallarna
Birger Jarlsgatan 57, 113 56 Stockholm, Sweden +46-8 15 22 44

Directions to Spårvagnshallarna: <http://www.sparvagnshallarna.com/karta.asp/id/71>

Konferens Spårvagnshallarna is one of the most modern conference sites in Stockholm, situated in the heart of the city, with Stockholm's splendid variety of shopping and entertainment right next door.

Contact

Eva Brorström-Lundén

E-mail: eva.bl@ivl.se

Phone: +46-31 725 62 30

Maria Kardborn

E-mail: maria.kardborn@ivl.se

Phone: +46-31 725 62 50

Working language

The official language of the workshop is English.