

3rd SWIFT-WFD Workshop in collaboration with AQUATERRA
**Towards operational monitoring programmes and protocols for
implementation of Water Framework Directive.**
**Chemical analysis and data interpretation of priority and emerging
pollutants at the river basin.**
15-16 May, 2006, Barcelona, Spain

Organized by:
Consejo Superior de Investigaciones Científicas, Barcelona, Spain
Institut d'Estudis Catalans, Barcelona, Spain



Institut
d'Estudis
Catalans

REGISTRATION FORM

To be returned to Dr Rikke Brix before April 1st 2006
(Fax: + 34 93 204 59 04, E-mail: rbrqam@cid.csic.es)

Name/First Name: _____

Title: _____

Company/Institution: _____

Address: _____

City: _____ Postal Code: _____

Country: _____

Telephone: _____ Fax: _____ E-mail: _____

I confirm that I will arrange advance payment of 250 (or 125) Euros to: ADECIT -
ASSOCIACIO PER AL DESENVOLUPAMENT DE LA CIENCIA I TECNOLOGIA-CSIC by:

Bank transfer Cheque

Bank account: 2100-0655-780200202561

Bank: LA CAIXA, Trias i Giro 11, E – 08034 Barcelona, Spain

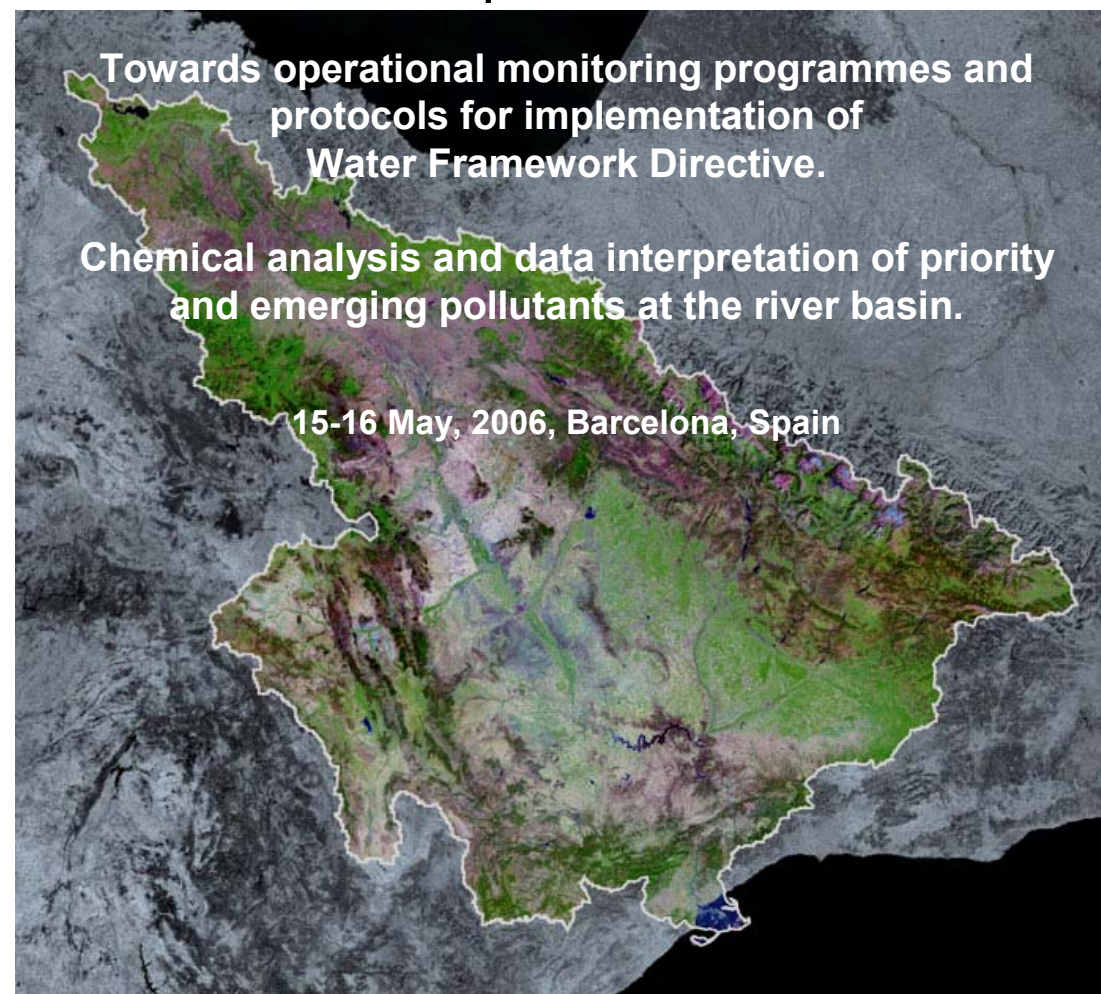
SWIFT: CAIXESBB

IBAN - ES70 2100-0655-780200202561

Date: ____/____/____

Signature: _____

3rd SWIFT-WFD Workshop in collaboration with AQUATERRA



Announcement and Call for Papers

Deadline for registration and abstract submission:
April 1st 2006

Scientific Committee

Damià Barceló, IIQAB-CSIC, Barcelona, Spain (chair)
 Mira Petrovic, IIQAB-CSIC, Barcelona, Spain
 Rikke Brix, IIQAB-CSIC, Barcelona, Spain (scientific secretary)
 Benoît ROIG, Ecole des Mines d'Alès, France
 Johannes Barth, University of Tübingen, Germany
 Peter Grathwohl, University of Tübingen, Germany
 Huub Rijnaarts, TNO, The Netherlands

Conference Secretariat

Dr. Rikke Brix
 Department of Environmental Chemistry, IIQAB-CSIC,
 c/ Jordi Girona 18-26, 08034 Barcelona, Spain.
 e-mail: rbrqam@cid.csic.es

Call for Papers

Abstracts for oral (4 A4 pages) and poster presentations (1 page) should be submitted to the Secretariat before **April 1st 2006**. Abstracts of all contributing lectures will be collected in the book of abstracts which will be issued to all participants upon registration.

Registration fee

SWIFT and AquaTerra members – **125 €**

Other authors/Participants – **250 €**

Ph.D. student (a letter from supervisor is required) – **125 €**

Fee will cover attendance to the Workshop, the book of abstract, 4 coffee breaks, two lunches and the Workshop dinner.

Payment in Euros (€), should be made in advance by either:

1. Bank transfer:

Account number: 2100-0655-780200202561

Bank: LA CAIXA

Bank Address: Trias i Giro, 11 – 08034 Barcelona, Spain

Account holder: ADECYT

SWIFT: CAIXESBB

IBAN - ES70 2100-0655-780200202561

With the note: SWIFT-Aquaterra workshop and the name(s) of the participant(s)

2. Cheque

A certified check payable to ADECYT, should be send to the Secretariat
 Please bear in mind that personal cheques cannot be accepted.

Deadline: 1st April 2006.

Accommodation

Bookings should be made directly to the hotel. Workshop's organizing committee will not arrange the accommodation for the participants.

Suggestion for the hotel:

1. RESIDÈNCIA D'INVESTIGADORS - CSIC

C/ Hospital 64, 08001 Barcelona

Phone: (+34) 93 443 86 10; Fax: (+34) 93 442 82 02

e-mail: investigadors@resa.es

Web: www.residencia-investigadors.es

Price, including breakfast and VAT is:

Single 56 € (working day), 42 € (weekend); Double 78 € (working day), 59 € (weekend)

Note: Close to "Las Ramblas" and Workshop location

2. HOTEL TURÍN***

Pintor Fortuny, 9, 08001 Barcelona

Phone: (+34) 93 302 48 12; Fax: (+34) 93 302 10 05

Web: <http://www.hotelturin.com/eng/index.html>

Prices (per room and night, 7.00% VAT not included):

Single room: 53-85 €; Double: 80-115 €

Breakfast price buffet: 9 €

Note: Close to "Las Ramblas" and Workshop location

3. HOTEL HCC TABER***

Aragó, 256, 08007 Barcelona

Phone: (+34) 93 487 38 87; Fax: (+34) 93 488 13 50

Email: reservas@hoteltaber.com

Web: <http://www.hoteltaber.com/>

Official rates (per room and night, 7.00% VAT not included):

Double room: 153 €; Double room for single use: 125 €

Breakfast buffet: 14 €

Note : very centric location, 15 min walking distance to the Workshop location

About SWIFT- WFD

<http://www.swift-wfd.com>

SWIFT-WFD focuses on the production of quality control tools for validation purposes of screening methods, an inventory of existing screening test (chemical and biological) methods through laboratory-based (tank experiments) and/or field interlaboratory studies based on a selection of reference aquatic ecosystems at European scale, and with classical laboratory-based analyses to validate their results and demonstrate their equivalence for parameters regulated both WFD. In parallel, the project considers the development of new "low-cost", innovative, screening techniques (both for chemical and biological parameters) and their validation using the same approach (interlaboratory testing and comparison with laboratory-based methods). In addition, exchange of knowledge, transfer of technologies and training related to water monitoring represents a key issue for ensuring the comparability of data produced by screening methods

In order to coordinate and update the information from the members of the network, three focus workshops will be held along the project. In 2004 the 1st workshop titled "Validation of robustness of sensors and bioassays for screening pollutants" was organized. 2nd workshop titled "Comparison of passive sampling with conventional water monitoring and analysis" was held in 2005.

About Aquaterra

<http://www.attempto-projects.de/aquaterra>

AquaTerra is an integrated project of the 6th EU RTD Framework Programme that aims to provide the scientific basis for an improved river basin management through a better understanding of the river-sediment-soil-groundwater system as a whole, by integrating both natural and socio-economics aspects at different temporal and spatial scales. Two sub-programmes of AquaTerra are dealing with monitoring activities: Basin and Monitor.

BASIN investigates selected sites in five contrasting European river basins, the Brévilles, Ebro, Meuse, Elbe and Danube. This sub-project has two action lines with one concentrating on soil-groundwater-river processes and the other focusing on floodplain-sediment-river interactions near the mouths of rivers. It provides field research scenarios for the other sub projects and intends to activate measures in order to mitigate adverse effects of climate change and contamination.

MONITOR develops and validates new analytical techniques by focusing on priority compounds that include persistent organic pollutants (POP) such as for instance pesticides. It also investigates emerging compounds such as pharmaceuticals by providing new protocols for non-regulated pollutants. New tools include bioassays for fast screening and innovative monitoring and sampling strategies.

Key note lectures

Topic 1. progress on EU projects

B Roig, Ecole des Mines d'Ales, ARMINES, France

Progress on recent SWIFT screening protocols for WFD implementation

J Barth and P Grathwohl, University of Tubingen, Germany

AQUATERRA monitoring activities at selected EU river basins

Topic 2. Immunochemical methods and bio-analysis

P D Hansen, Technical University of Berlin, Germany

Bio-analytical systems and risk assessment of organic pollutants in water

P Kramer, GSF, Germany

How can immunochemical methods contribute to the implementation of WFD?

MP Marco, IIQAB-CSIC, Barcelona

ELISA kits for non ionic and anionic surfactants in natural and wastewater samples.

F Rubio, Abraxis LLC, PA, USA

New ELISA developments for trace level determination of brominated flame retardants in solid environmental matrices

Topic 3. Monitoring by chemical analysis

Ph Quevauviller, EU Commission, DG Environment, Brussels, Belgium

Progress of the Chemical Monitoring Activity under the Common Implementation Strategy of the WFD

R Greenwood, University of Portsmouth, UK

Passive samplers in environmental water monitoring

O Thomas, University of Sherbrooke, Canada

Monitoring programmes (water, sediments) in Canada

Topic 4. Data treatment and interpretation

R Tauler, IIQAB-CSIC, Barcelona, Spain

Chemometrics data treatment of environmental monitoring data (focus on Ebro river).

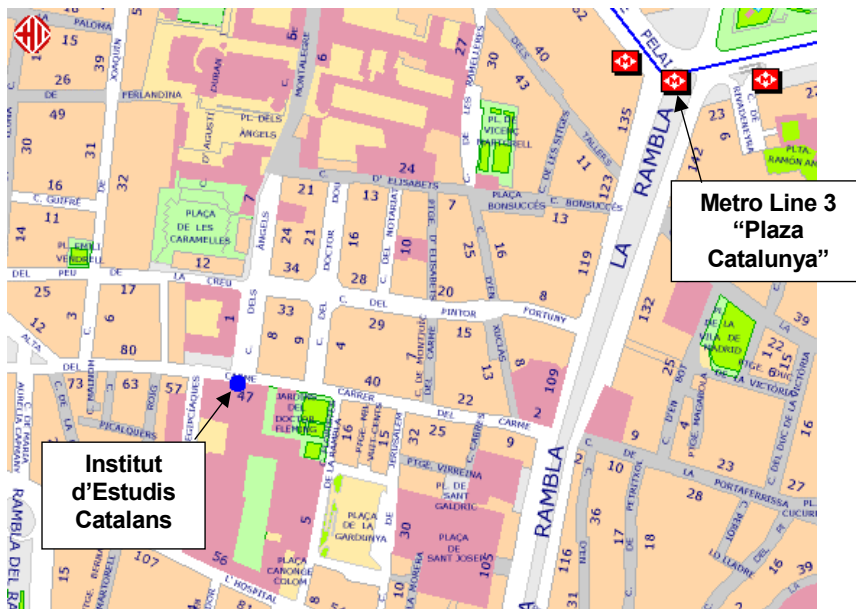
R Brix, IIQAB-CSIC, Barcelona, Spain

Data treatment and considerations regarding analytical uncertainty in monitoring programmes

IMPORTANT: A limited number of key note lectures (30 min) and short oral presentations (20 min) can be accepted. Please send the tentative title as soon as possible. If received late the abstract will be selected for the poster session.

Workshop location

The Workshop will be held at the Institut d'Estudis Catalans. Address: Carrer del Carme 47, Barcelona (5 min from Plaza Catalunya)



How to find the location (from Barcelona airport)

- by taxi (15-20 min, cca 25 €)
- by train (every 30 min) or by bus (every 15 min) from the airport to Plaza Catalunya

Local information can be obtained from the following internet sites:

- Barcelona tourist information guide: www.seebarcelona.com
- Barcelona on-line tourist information: www.barcelona-on-line.es
- Map of Barcelona: www.bcn.es/guia/welcomea.htm
- Map of the Barcelona metro system: www.tmb.net/eng/home.htm

Background

The monitoring requirements for successfully implementing the Water Framework Directive (WFD) will directly depend upon available measurement techniques of demonstrated quality, which will be able to deliver reliable data at an affordable cost. Besides the necessary laboratory analyses, screening methodologies will play a key role in the WFD implementation, mainly as a complementary approach for quality monitoring improvement. The WFD will represent a powerful management tool only if monitoring data are of reliable and comparable quality.

Objectives

The focus of the SWIFT -WFD project is on the evaluation of screening methods for the determination of pollutants of interest within the Water Framework Directive. SWIFT WFD is to provide the "tools" for an appropriate monitoring of pollutants. On the other side, AQUATERRA is an integrated project that should provide management tools at the river basin scale with particular interest on the river-sediment-soil-groundwater system. Two sub-programmes of AQUATERRA are dealing with monitoring activities and also several case studies at various river basins like Ebro, Danube, Elbe and Meuse. Both projects, SWIFT and AQUATERRA have a common interest in developing and using the best available screening and chemical analytical tools for monitoring of pollutants at the river basin.

Based on these previous arguments and in order to avoid duplication of work and reinforce the expertise a common workshop to exchange information on the results of both projects is organized. This workshop plans to put together the experiences gained at both projects and to be a unique platform of information exchange and dissemination.

Topics

- Recent progress on EU projects SWIFT and AQUATERRA concerning the monitoring activities
- Latest developments on screening methods based on immunochemistry and biosensors for water monitoring
- Chemical analytical improvements for identification and trace level quantitation of pollutants in water including novel sampling devices
- Data treatment interpretation of the monitoring data based on EU funded river basin case studies of AQUATERRA and related projects
- An international perspective on application of innovative screening tools like ELISA